

1 STEVE W. BERMAN (*pro hac vice* pending)
ASHLEY A. BEDE (*pro hac vice* pending)
2 HAGENS BERMAN SOBOL SHAPIRO LLP
1918 Eighth Avenue, Suite 3300
3 Seattle, WA 98101
Telephone: (206) 623-7292
4 Facsimile: (206) 623-0594
steve@hbsslaw.com
5 *ashleyb@hbsslaw.com*

6 ELAINE T. BYSZEWSKI (SBN 222304)
CHRISTOPHER R. PITOUN (SBN 290235)
7 HAGENS BERMAN SOBOL SHAPIRO LLP
301 N. Lake Avenue, Suite 203
8 Pasadena, CA 91101
Telephone: (213) 330-7150
9 Facsimile: (213) 330-7152
elaine@hbsslaw.com
10 *christopherp@hbsslaw.com*

11 *Attorneys for Plaintiff and the Proposed Class*

12 UNITED STATES DISTRICT COURT
13 NORTHERN DISTRICT OF CALIFORNIA
14

15 ROBERT HODSDON, on behalf of himself and
all others similarly situated,

16 Plaintiff,

17 v.
18

19 MARS, INC., a Delaware corporation, and
20 MARS CHOCOLATE NORTH AMERICA
LLC, a Delaware company,

21 Defendants.
22

Case No. 3:15-cv-04450

CLASS ACTION

**COMPLAINT FOR VIOLATION OF
CALIFORNIA CONSUMER
PROTECTION LAWS**

DEMAND FOR JURY TRIAL

TABLE OF CONTENTS

Page

I. OVERVIEW..... 1

II. PARTIES..... 5

III. JURISDICTION AND VENUE..... 5

IV. FACTUAL ALLEGATIONS..... 6

 A. The Worst Forms of Child Labor in the Ivory Coast Are Used to Produce Mars’ Chocolate Products. 6

 1. In 2001 the Industry Agrees to the Harkin-Engel Protocol and Promises to Eliminate the Worst Forms of Child Labor in the Ivory Coast by 2005. 8

 2. The Industry Breaks this Promise Repeatedly in a Series of Follow-up Statements Postponing Their Deadline to 2008, to 2010, and now to 2020. 8

 3. Meanwhile the Worst Forms of Child Labor in the Ivory Coast Continue – with a Recent Report Commissioned by the U.S. Department of Labor Finding That They Have Become Even More Prevalent. 9

 B. Mars Fails to Disclose the Use of the Worst Forms of Child Labor in Its Supply Chain. 13

 C. Mars Recognizes that the Use of Child or Slave Labor in its Supply Chain Is Wrong. 17

 D. Mars’ Use of the Worst Forms of Child Labor in Its Chocolate Products Supply Chain Is Material to Consumers..... 19

V. CLASS ACTION ALLEGATIONS..... 20

VI. CAUSES OF ACTION..... 23

 FIRST CAUSE OF ACTION VIOLATION OF THE CALIFORNIA UNFAIR COMPETITION LAW (CAL. BUS. & PROF. CODE § 17200, *ET SEQ.*) 23

 SECOND CAUSE OF ACTION VIOLATIONS OF THE CONSUMERS LEGAL REMEDIES ACT (CAL. CIV. CODE § 1750, *ET SEQ.*)..... 24

 THIRD CAUSE OF ACTION VIOLATIONS OF THE FALSE ADVERTISING LAW (CAL. BUS. & PROF CODE §§ 17500, *ET SEQ.*)..... 26

JURY TRIAL DEMAND..... 28

1 Plaintiff Robert Hodsdon (“Plaintiff”) brings this action on behalf of himself and all others
2 similarly situated against Mars Inc. and Mars Chocolate North America LLC (“Defendants” or
3 “Mars”). Plaintiff’s allegations against Defendants are based upon information and belief and upon
4 investigation of Plaintiff’s counsel, except for allegations specifically pertaining to Plaintiff, which
5 are based upon each Plaintiff’s personal knowledge.

6 I. OVERVIEW

7 1. America’s largest and most profitable food conglomerates should not tolerate child
8 labor, much less child slave labor, anywhere in their supply chains. These companies should not turn
9 a blind eye to known human rights abuses or shirk from investigating and preventing potential
10 human rights abuses by their suppliers, especially when the companies consistently and affirmatively
11 represent that they act in a socially and ethically responsible manner. When these food
12 conglomerates fail to uphold their responsibility for ensuring the absence of child and slave labor in
13 their supply chains, their misconduct has the profound consequence of supporting and encouraging
14 such labor. And when these food conglomerates fail to disclose the use of child and slave labor in
15 their supply chains to consumers, they are deceived into buying products they would not have
16 otherwise and thereby unwittingly supporting child and slave labor themselves through their product
17 purchases. Such food conglomerates should be required to make restitution to the consumers they
18 have deceived and to ensure the absence of child and slave labor in their supply chains in the future.

19 2. Chocolate is perhaps the most beloved confectionary ingredient in the world. Most
20 major companies that purchase chocolate obtain it from sources on the Ivory Coast. The lives of the
21 people who harvest cocoa are nothing short of terrible. The labor in harvesting cocoa is performed
22 by slave laborers – often children. Many of these children are taken from poor countries like Mali.
23 Some of these children are abducted, and there are countless missing children claims. To make
24 matters worse, sometimes extremely poor people sell their own children into slavery for as little as
25 \$30. Children that are sometimes not even 10 years old carry huge sacks that are so big that they
26 cause them serious physical harm. Much of the world’s chocolate is quite literally brought to us by
27 the back-breaking labor of child slaves.

1 3. Mars is one of the largest and most profitable food conglomerates in the United
2 States. Mars sources its food products from all over the globe. Among its products, Mars markets
3 and distributes chocolate products, including M&M's, Mars Bars, Snickers, Twix, 3Musketees,
4 Galaxy, and Milky Way, which are made with cocoa beans from the Ivory Coast in Western Africa
5 (“Chocolate Products”).

6 4. Although Mars’ corporate business principles and supplier code prohibit both child
7 and forced labor, Mars is aware that cocoa beans from the Ivory Coast are produced using child
8 labor, including the Worst Forms of Child Labor as recognized by the United Nations: the
9 compulsory labor of trafficked children and the labor of children involving dangerous tools, transport
10 of heavy loads, and exposure to toxic substances, i.e., hazardous work.¹

11 5. The Bureau of International Labor Affairs of the U.S. Department of Labor confirms
12 that cocoa beans from the Ivory Coast are likely the product of child and/or forced labor:²

Country	Good	Child Labor	Forced Labor
Cote d'Ivoire	Cocoa	X	X
Cote d'Ivoire	Coffee	X	X

13
14
15
16
17 6. The Bureau of International Labor Affairs of the U.S. Department of Labor reports
18 that “children from within Côte d’Ivoire, as well as migrant children from Benin, Burkina Faso,
19 Guinea, Mali, Nigeria, and Togo, are working under conditions of forced labor on Ivoirian cocoa
20 farms. Based on the most recently available estimate from Tulane University, over 4,000 children
21 work in conditions of forced labor in the production of cocoa in Côte d’Ivoire. Some children are
22 sold by their parents to traffickers, some are kidnapped, and others migrate willingly but fall victim
23 to traffickers who sell them to recruiters or farmers, where they end up in conditions of bonded labor.
24 Some farmers buy the children and refuse to let them leave the farm until the debt of their purchase
25 has been worked off. The children are frequently not paid for their work; some of their wages are

26
27 ¹ <http://www.ilo.org/ipec/facts/WorstFormsofChildLabour/lang--en/index.htm>.

² <http://www.dol.gov/ilab/reports/child-labor/list-of-goods/>.

1 paid to the recruiter or trafficker. These children are held against their will on isolated farms, are
2 locked in their living quarters at night, and are threatened and beaten if they attempt to escape. They
3 are punished by their employers with physical abuse. They are forced to work long hours, including
4 overtime, and are required to work even when they are sick. Some children are denied sufficient
5 food by their traffickers and employers. Some children are forced to perform dangerous tasks,
6 including carrying heavy loads, using machetes and sharp tools, and applying pesticides and
7 fertilizers.”³

8 7. Moreover, a July 30, 2015, report entitled “Survey Research on Child Labor in West
9 African Cocoa Growing Areas,” prepared by the Payson Center for International Development of
10 Tulane University and sponsored by the U.S. Department of Labor, found that during the time period
11 from 2013 to 2014 over 1.1 million children in the Ivory Coast were engaged in the most common
12 Worst Forms of Child Labor, hazardous work, including the use of dangerous tools, transport of
13 heavy loads, and exposure to toxic substances. This was up from the 791,181 children engaged in
14 such work at the time of the last survey in 2008 to 2009. Put another way, the 22% of children
15 engaged in such labor in 2008 to 2009 had increased to 31% of children in 2013 and 2014.⁴

16 8. “The USDOL-funded research found that over half of the children working on cocoa
17 farms have been injured in work-related activities.”⁵ The 2015 Payson report found that 37% of
18 those working in cocoa production experienced wounds/cuts while performing agricultural work and
19 11% experienced muscle pain. Thirty-one percent of children working in cocoa production experi-
20 enced “very bad pain” when injured, and 11% were unable to continue working after being injured.⁶

21 9. Notwithstanding its awareness of the Worst Forms of Child Labor used to produce the
22 cocoa beans used to make its Chocolate Products, Mars does not disclose this to consumers at the
23 point of purchase.

24
25 ³ <http://www.dol.gov/ilab/reports/child-labor/list-of-products/index-country.htm#Cote-dIvoire>.

26 ⁴ <http://www.childlaborcocoa.org/index.php/2013-14-final-report>.

27 ⁵ <http://www.dol.gov/ilab/issues/child-labor/cocoa/>.

28 ⁶ <http://www.childlaborcocoa.org/index.php/2013-14-final-report>.

1 10. Knowing that Mars Chocolate Products are likely the product of the Worst Forms of
2 Child Labor is material to consumers not wishing to support such labor with their purchasing power.
3 In the course of marketing and selling its Chocolate Products, however, Mars materially omits and
4 does not disclose the likelihood that its Chocolate Products are made with child and slave labor.
5 Furthermore, Mars does not disclose that despite its awareness that child and slave labor is being
6 used in its supply chains, Mars has not required all of its suppliers to remedy this human tragedy.
7 Mars, as one of the largest companies in the world, can dictate the terms by which cocoa beans are
8 produced and supplied to it, including the labor conditions in the supply chain. But through its own
9 inadequate efforts over the course of decades Mars is presently not able to trace all of the cocoa
10 beans that make up its Chocolate Products back to the cocoa plantations on which they are grown,
11 much less ensure that the cocoa beans are not the product of child or slave labor. And meanwhile
12 Mars continues to profit from the child and forced labor that is used to make its Chocolate Products.
13 This is shameful. Had Plaintiff and Class Members known the truth, they would not have purchased
14 Mars Chocolate Products or paid as much for them.

15 11. Mars' material omissions and failure to disclose is all the more appalling considering
16 that Mars has identified "global expectations prohibiting the use of child labour" as one of its
17 corporate business principals. But Mars does not live up to its own ideals. Mars' public espousal of
18 a message condemning child labor and its superior knowledge of the likelihood that the cocoa beans
19 used to make its Chocolate Products are so produced obligate Mars to disclose the truth to consumers
20 at the point of sale.

21 12. Mars' conduct described herein violates the (i) California's Business & Professions
22 Code §§ 17200, *et seq.* (the Unfair Competition Law or "UCL"); (ii) California Civil Code §§ 1750,
23 *et seq.* (the Consumers Legal Remedies Act or "CLRA"); and (iii) California's Business &
24 Professions Code §§ 17500, *et seq.* (the False Advertising Law or "FAL"). Plaintiff brings this
25 action on behalf of a California class for restitution and injunctive relief, and any other relief deemed
26 appropriate by the court to which this case is assigned.

II. PARTIES

1
2 13. Plaintiff Robert Hodsdon is and was at all relevant times a citizen of the State of
3 California and resides in Larkspur, California. Plaintiff has purchased Mars Chocolate Products at
4 various retail stores including Target from 2011 through present. Plaintiff saw the product
5 packaging and labeling as well as signage in retail stores where he purchased the Chocolate Products.
6 Plaintiff would not have purchased the Chocolate Products or paid as much for them had Nestlé
7 disclosed the truth. Plaintiff seeks restitution and injunctive relief requiring Nestlé to cease its
8 deceptive marketing.

9 14. Defendant Mars, Inc. is a global food and beverage company. Mars, Inc. is
10 incorporated in Delaware with its principal place of business located at 6885 Elm Street, McLean,
11 Virginia 22101.

12 16. Defendant Mars Chocolate North America LLC is a subsidiary of Mars, Inc. that
13 produces and markets chocolate products. Mars Chocolate North America LLC is incorporated in
14 Delaware with its principal place of business located at 800 High Street, Hackettstown, New Jersey
15 07840.

III. JURISDICTION AND VENUE

16
17 15. This Court has diversity jurisdiction over this action pursuant to 28 U.S.C. § 1332(d),
18 because the amount in controversy for the Class exceeds \$5,000,000, and the Class includes
19 members who are citizens of a different state than Defendant.

20 16. This Court has personal jurisdiction over Defendant because it has offices and
21 conducts substantial business in this district and throughout the State of California.

22 17. Venue is proper in this Court under 28 U.S.C. § 1391(b), because Defendant has
23 marketed and sold Chocolate Products within this district, and a substantial number of the acts and
24 omissions alleged herein occurred within this district.

IV. FACTUAL ALLEGATIONS

A. The Worst Forms of Child Labor in the Ivory Coast Are Used to Produce Mars' Chocolate Products.

18. Ivory Coast is the world's largest producer of cocoa, the raw ingredient that makes chocolate,⁷ an industry estimated to be worth more than \$90 billion a year.⁸ According to the World Cocoa Foundation, "Cote d'Ivoire supplies more than 40% of the world's cocoa."⁹

19. Mars acknowledges, as it must, that "child labor and trafficking are serious challenges facing many supply chains that originate in developing countries, particularly for the entire cocoa industry, and most profoundly in West Africa."¹⁰ Mars states that it "has worked for years to address these challenges....with various coalitions including the World Cocoa Foundation and the International Cocoa Initiative to [] combat the worst forms of child."¹¹ Mars further acknowledges that it is "advocating with the governments of Ghana and Côte d'Ivoire to address child labor, including on the best method to monitor and remediate child labor within the cocoa sector."¹²

20. Despite these acknowledgements, Mars makes no disclosure regarding child or slave labor to consumers at the point of sale and the vast majority of consumers are unaware of these human rights abuses.

21. As the Food Empowerment Project describes in its article entitled Child Labor and Slavery in the Chocolate Industry, a "child's workday typically begins at six in the morning and ends in the evening."¹⁸ Some of the children use chainsaws to clear the forests.¹⁷ Other children climb the cocoa trees to cut bean pods using a machete. These large, heavy, dangerous knives are the standard

⁷ <http://www.theguardian.com/global-development-professionals-network/2015/sep/02/child-labour-on-nestle-farms-chocolate-giants-problems-continue>.

⁸ <http://www.bbc.com/news/world-africa-18644870>.

⁹ http://worldcocoafoundation.org/wp-content/uploads/Economic_Profile_of_the_US_Chocolate_Industry_2011.pdf.

¹⁰ <http://www.mars.com/nochildlabor>; see also <http://www.mars.com/global/about-mars/faq.aspx>.

¹¹ <http://www.mars.com/nochildlabor>.

¹² <http://www.mars.com/global/about-mars/mars-pia/our-approach-to-business/public-policy/sustainable-agriculture.aspx>.

1 tools for children on the cocoa farms.... Once they cut the bean pods from the trees, the children
2 pack the pods into sacks that weigh more than 100 pounds when full and drag them through the
3 forest.¹³

4 22. “Aly Diabate, a former cocoa slave, said, ‘Some of the bags were taller than me. It
5 took two people to put the bag on my head. And when you didn’t hurry, you were beaten.’ Holding
6 a single large pod in one hand, each child has to strike the pod with a machete and pry it open with
7 the tip of the blade to expose the cocoa beans. Every strike of the machete has the potential to slice a
8 child’s flesh. The majority of children have scars on their hands, arms, legs or shoulders from the
9 machetes. In addition to the hazards of using machetes, children are also exposed to agricultural
10 chemicals on cocoa farms in Western Africa.”¹⁴

11 23. “Cases often involve acts of physical violence, such as being whipped for working
12 slowly or trying to escape. Reporters have also documented cases where children and adults were
13 locked in at night to prevent them from escaping. Former cocoa slave Aly Diabate told reporters,
14 ‘The beatings were a part of my life. I had seen others who tried to escape. When they tried, they
15 were severely beaten.’ Drissa, a recently freed slave who had never even tasted chocolate,
16 experienced similar circumstances. When asked what he would tell people who eat chocolate made
17 from slave labor, he replied that they enjoyed something that he suffered to make, adding, ‘When
18 people eat chocolate, they are eating my flesh.’”¹⁵

19 24. In *DOE I v. Nestlé USA Inc.*, the Ninth Circuit stated:

20 The use of child slave labor in the Ivory Coast is a humanitarian
21 tragedy. Studies by International Labour Organization, UNICEF, the
22 Department of State, and numerous other organizations have
23 confirmed that thousands of children are forced to work without pay in
24 the Ivorian economy. Besides the obvious moral implications, this
widespread use of child slavery contributes to poverty in the Ivory
Coast, degrades its victims by treating them as commodities, and
causes long-term mental and physical trauma.¹⁶

25 ¹³ <http://www.foodispower.org/slavery-chocolate/>.

26 ¹⁴ *Id.*

27 ¹⁵ *Id.*

28 ¹⁶ 766 F.3d 1013, 1017 (9th Cir. 2014).

1 **1. In 2001 the Industry Agrees to the Harkin-Engel Protocol and Promises to**
2 **Eliminate the Worst Forms of Child Labor in the Ivory Coast by 2005.**

3 25. In 2001, the Chocolate Manufacturers Association of the United States of America
4 signed the *Protocol for the Growing and Processing of Cocoa Beans and their Derivative Products*
5 *in a Manner that Complies with ILO Convention 182 Concerning the Prohibition and Immediate*
6 *Action for the Elimination of the Worst Forms of Child Labor* (“Harkin-Engel Protocol”).¹⁷ Mars
7 was a signatory to this agreement, which “acknowledged the problem of forced child labor in West
8 Africa.” The Harkin-Engel Protocol noted that “while the scope of the problem is uncertain, the
9 occurrence of the worst forms of child labor in the growing and processing of cocoa beans and their
10 derivative products is simply unacceptable.” Accordingly, the industry committed to develop and
11 implement standards of public certifications by July 1, 2005, “that cocoa beans and their derivative
12 products have been grown and/or processed without any of the worst forms of child labor.” Mars,
13 and the other signatories, promised to work “wholeheartedly...to fulfill the letter and spirit of this
14 Protocol, and to do so in accordance with the deadlines prescribed herein.”¹⁸

15 **2. The Industry Breaks this Promise Repeatedly in a Series of Follow-up**
16 **Statements Postponing Their Deadline to 2008, to 2010, and now to 2020.**

17 26. In a series of subsequent Joint Statement, the chocolate industry effectively kicks the
18 can down the road on its promises.

19 27. On July 1, 2005, the industry issued a Joint Statement acknowledging that “[i]n
20 September 2001, chocolate and cocoa industry representatives signed an agreement, developed in
21 partnership with Senator Harkin and Representative Engel, to eliminate the worst forms of child
22 labor in the growing of cocoa beans and their derivative products from West Africa. But “the July 1,
23 2005 deadline will not be fully met.” That being said, the industry “assured Sen. Harkin and Rep.
24 Engel that it is fully committed to achieving a certification system, which can be expanded across the
25 cocoa-growing areas of West Africa and will cover 50% of the cocoa growing areas of Cote d’Ivoire

26 ¹⁷ The protocol was established by Senator Tom Harkin and Congressman Eliot Engel.
27 [http://www.ilo.org/washington/areas/elimination-of-the-worst-forms-of-child-](http://www.ilo.org/washington/areas/elimination-of-the-worst-forms-of-child-labor/WCMS_159486/lang--en/index.htm)
28 [labor/WCMS_159486/lang--en/index.htm.](http://www.ilo.org/washington/areas/elimination-of-the-worst-forms-of-child-labor/WCMS_159486/lang--en/index.htm)

¹⁸ mvoplatforn.nl/about-us/publications-en/Publication_2380.

1 and Ghana within three years.” Senator Harkin stated, that he was “disappointed that the July 1
2 deadline established in the Protocol was not fully met,” but he was “pleased that they have
3 committed to redouble their efforts to create a certification system and eliminate the worst forms of
4 child labor and forced labor in the cocoa fields and throughout the supply chain.”¹⁹

5 28. Unable to meet the new self-imposed deadline, on June 16, 2008, the industry issued
6 another Joint Statement promising “to have a sector-wide independently verified certification process
7 fully in place across each country’s cocoa-growing sector by the end of 2010.”²⁰

8 29. Again unable to meet the new self-imposed deadline, on September 13, 2010, the
9 industry issued yet another Joint Statement promising “[b]y 2020, the establishment and
10 implementation of a credible and transparent sector-wide monitoring system across cocoa growing
11 regions in the two countries” and – instead of the elimination promised in 2001 – “the worst forms of
12 child labor as defined by ILO Convention 182 in the cocoa sectors of Côte d’Ivoire and Ghana will
13 be reduced by 70 percent.”²¹ Mars also asserts that 100% of its cocoa will come from certified
14 sources by 2020. Only 36% of its cocoa was certified in 2014.²²

15 **3. Meanwhile the Worst Forms of Child Labor in the Ivory Coast Continue – with**
16 **a Recent Report Commissioned by the U.S. Department of Labor Finding That**
They Have Become Even More Prevalent.

17 30. In order to assess the chocolate industry’s progress in meeting the Harkin-Engle
18 Protocol, the Department of Labor contracted with the Payson Center for International Development
19 of Tulane University, awarding it a \$4.3 million contract in 2006.

20 31. “As part of the Tulane-USDOL contract, Tulane studies progress made towards the
21 elimination of the Worst Forms of Child Labor (WFCL) and Forced Adult Labor (FAL) in the cocoa
22 sector of Cote d’Ivoire and Ghana and towards meeting obligations under the Harkin-Engel Protocol,

23 _____
¹⁹ www.cacao.gouv.ci/commun/documents/jointstatementSenateurTomHarkin.pdf.

24 ²⁰ [http://www.csrwire.com/press_releases/14132-Joint-Statement-from-U-S-Senator-Tom-
25 Harkin-Representative-Eliot-Engel-and-the-Chocolate-and-Cocoa-Industry-on-the-Implementation-
of-the-Harkin-Engel-Protocol-](http://www.csrwire.com/press_releases/14132-Joint-Statement-from-U-S-Senator-Tom-Harkin-Representative-Eliot-Engel-and-the-Chocolate-and-Cocoa-Industry-on-the-Implementation-of-the-Harkin-Engel-Protocol-).

26 ²¹ <http://www.dol.gov/ilab/projects/summaries/GhanaSignedDeclaration.pdf>;
<http://www.dol.gov/ilab/projects/summaries/CocoaFrameworkAction.pdf>.

27 ²² <http://www.mars.com/global/about-mars/mars-pia/our-supply-chain/cocoa.aspx>.

1 a voluntary agreement against the WFCL and FAL signed in September 2001 by the Chocolate
2 Manufacturers Association (CMA) and the World Cocoa Foundation (WCF) and witnessed by the
3 congressional offices of U.S. Sen. Tom Harkin (D-Iowa) and U.S. Rep. Eliot Engel (D-N.Y.).”²³

4 32. “Since the start of the Tulane-USDOL collaboration in October 2006, Tulane has
5 implemented several representative population-based household surveys of child labor in the cocoa
6 sector, examined efforts by the international cocoa/chocolate industry and the governments of Côte
7 d’Ivoire and Ghana to establish child labor monitoring, certification and verification systems, studied
8 remediation activities and other interventions against the WFCL and FAL in the cocoa sector
9 financed by the cocoa/chocolate industry and trained government officials in Cote d’Ivoire and
10 Ghana to remediate the WFCL and monitor the number of children working in this sector. Tulane’s
11 research findings are reported in annual reports to the U.S. Congress.”²⁴

12 33. On March 31, 2011, the Payson Center released its report entitled, “Oversight of
13 Public and Private Initiatives to Eliminate the Worst Forms of Child Labor in the Cocoa Section in
14 Cote d’Ivoire and Ghana.”²⁵ The report found that the chocolate industry’s funding “has not been
15 sufficient in light of its commitment to eliminate [the Worst Forms of Child Labor] in the cocoa
16 sectors of Ghana and Cote d’Ivoire as per Article 1 of the Protocol.” The report found that
17 “important provisions of the Protocol have not yet been realized.” For example, the chocolate
18 industry has not met Article 6, “a key tenet of the Protocol with a 2005 deadline,” because the
19 chocolate industry “has only partly developed and not enforced industry-wide standards upholding
20 ILO Convention 182 in the cocoa sectors of Cote d’Ivoire and Ghana.” Rather, “the present level of
21 Industry engagement of product certifiers allows these certifiers to cover only a small fraction of
22 cocoa producing regions in each country.”

23 34. The 2011 report further found that the chocolate industry had failed to achieve “its
24 Joint Statement 2005 commitment to cover 50 percent of the two countries’ cocoa-producing areas

25 ²³ <http://childlabor-payson.org/>.

26 ²⁴ *Id.*

27 ²⁵ <http://childlabor-payson.org/Tulane%20Final%20Report.pdf>.

1 by July 2008 and has yet to accomplish the goals of the Joint Statement 2008 commitment of
2 reaching 100% of the cocoa growing regions of both countries with remediation activities by the end
3 of 2010.” And it was not even close – the report found that remediation activities had only reached
4 3.8% of the cocoa growing region in the Ivory Coast.²⁶ Thus, the children in the region continue to
5 engage in the Worst Forms of Child Labor, including hazardous work like carrying heavy loads,
6 weeding and breaking cocoa pods using machetes, and spraying chemicals without any protective
7 gear.

8 35. As CNN reported in 2012, “[d]uring the course of an investigation for [it]’s Freedom
9 Project initiative – an investigation that went deep into the cocoa fields of Ivory Coast – a team of
10 CNN journalists found that child labor, trafficking and slavery are rife in an industry that produces
11 some of the world’s best-known brands.”²⁷ CNN reported on its encounter with one such modern
12 child slave:

13 Chocolate’s billion-dollar industry starts with workers like Abdul.
14 He squats with a gang of a dozen harvesters on an Ivory Coast farm.
15 Abdul holds the yellow cocoa pod lengthwise and gives it two quick
16 cracks, snapping it open to reveal milky white cocoa beans. He
17 dumps the beans on a growing pile.

18 Abdul is 10 years old, a three-year veteran of the job.

19 He has never tasted chocolate.

20 [¶]

21 When Abdul’s mother died, a stranger brought him across the border
22 to the farm. Abdul says all he’s given is a little food, the torn clothes
23 on his back, and an occasional tip from the farmer. Abdul is a
24 modern child slave.
25

26 ²⁶ *Id.*

27 ²⁷ <http://thecnnfreedomproject.blogs.cnn.com/2012/01/19/child-slavery-and-chocolate-all-too-easy-to-find/>.

1 36. As the U.S. Department of Labor itself reported in 2013, “children in Côte d’Ivoire
2 continue to engage in the worst forms of child labor in agriculture, particularly on cocoa farms,
3 sometimes under conditions of forced labor.” The DOL further reported that over half of these
4 children “were estimated to report injuries from dangerous activities” and that “[c]hildren from
5 neighboring West African countries are trafficked into Côte d’Ivoire for agricultural labor, especially
6 in cocoa production.”²⁸

7 37. The most recent report prepared by the Payson Center for International Development
8 of Tulane University and sponsored by the U.S. Department of Labor is dated July 30, 2015, and
9 entitled “Survey Research on Child Labor in West African Cocoa Growing Areas.” The summary
10 document for the ninety-nine page report states that “*the numbers of children working in cocoa
11 production, in child labor in cocoa production, and in hazardous work in cocoa production have
12 increased from 2008/09 to 2013/14,*” with the number of children doing hazardous work in cocoa
13 production growing by 46%.²⁹

14 38. Thus, Fair Trade International reported on August 4, 2015, that the “2013/2014
15 Survey Research on Child Labor in West African Cocoa-Growing Areas released last week by the
16 Tulane University shows that child labor in cocoa production is on the rise in West Africa.”³⁰

17 39. More specifically, the 2015 Payson Report found that during the time period from
18 2013 to 2014 over 1.1 million children in the Ivory Coast were engaged in the most common Worst
19 Forms of Child Labor, hazardous work, including the use of dangerous tools, transport of heavy
20 loads, and exposure to pesticides. This was up from the 791,181 children engaged in such work at
21 the time of the last survey in 2008 to 2009. Put another way, the 22% of children engaged in such
22 labor in 2008 to 2009 had increased to 31% of children in 2013 and 2014.³¹

23 40. “The 2015 Payson Report concluded that “[a]fter increases in the total number of
24 children working in the cocoa sector in both countries combined, 1.5 million children still have to be

25 ²⁸ <http://www.dol.gov/ilab/reports/child-labor/findings/2013TDA/cotedivoire.pdf>.

26 ²⁹ <http://www.childlaborcocoa.org/index.php/2013-14-final-report>.

27 ³⁰ <http://fairtradeamerica.org/post/125861349722/childrens-involvement-in-west-african-cocoa>.

28 ³¹ <http://www.childlaborcocoa.org/index.php/2013-14-final-report>.

1 removed from hazardous work by 2020 in order to reach the Framework of Action target.”

2 However, “[w]ith production growing and increasing global demand for cocoa beans, production
3 methods and/or child labor mitigation strategies need to change drastically to achieve major
4 progress.”³²

5 41. As the Fair Labor Association noted with respect to another major U.S. chocolate
6 manufacturer, although “Nestlé does not own or operate farms in Côte d’Ivoire,” it “is well
7 positioned to make a positive impact on the livelihoods of workers in the cocoa supply chain ... due
8 to its leverage with its suppliers and the volume of cocoa beans it procures.”³³ Likewise, Mars has
9 had the opportunity to take effective advantage of such leverage since 2001 to eliminate child and
10 slave labor from its Ivorian supply chain as it promised, but it has failed to do so – and accordingly it
11 has failed an entire generation of West African children.

12 42. In sum, Mars’ intention to obtain 100% of its cocoa from certified sources by 2020 –
13 whether it comes true or not – does not free Mars from its obligation to provide disclosures to
14 consumers at the point of sale regarding the existence of child and slave labor that indisputably has
15 existed and continues to exist in Mars’ supply chain for Chocolate Products, based on Mars’ superior
16 knowledge of its supply chain. And even were the Ivorian human rights abuses a problem that Mars
17 was powerless to resolve (it is not), Mars would still be obligated to disclose to consumers at the
18 point of sale the existence of child and slave labor in its supply chain for Chocolate Products. The
19 vast majority of consumers are not aware of the human rights abuses and reasonable consumers
20 would not have purchased Mars Chocolate Products had they known the truth.

21 **B. Mars Fails to Disclose the Use of the Worst Forms of Child Labor in Its Supply Chain.**

22 43. As explained by another major U.S. chocolate manufacturer, in the Ivory Coast, the
23 “journey from the cocoa bean to the chocolate ... starts with the farmer, who sells his crop either to a
24 cooperative or a pisteur. There are about 700 cooperatives in the country and around 5,000

26 ³² <http://www.childlaborcocoa.org/index.php/2013-14-final-report>.

27 ³³ <http://www.nestle.com/Media/NewsAndFeatures/fla-report-cocoa>;
<http://www.nestlecocoaplan.com/nestle-sets-out-actions-to-address-child-labour/>.

1 independent pisteurs. These are roving buyers/salesmen who call on farmers to buy as much cocoa
2 as they can. They're called pisteurs because they go up and down the pistes or rough tracks which
3 lead to the cocoa villages. The cooperatives and pisteurs sell to larger middlemen called traitants,
4 who in turn sell to exporters, who sell to traders who sell to processors." "The beans from many
5 different trees and farms are then combined and increasingly larger quantities are sold from one
6 buyer to the next until the beans reach the shipping port. Here, beans from literally thousands of
7 villages are combined into large shipments to countries across the world."³⁴

8 44. According to the World Cocoa Foundation, "47% of the total U.S. imports of cocoa
9 beans come from Cote d'Ivoire."³⁵

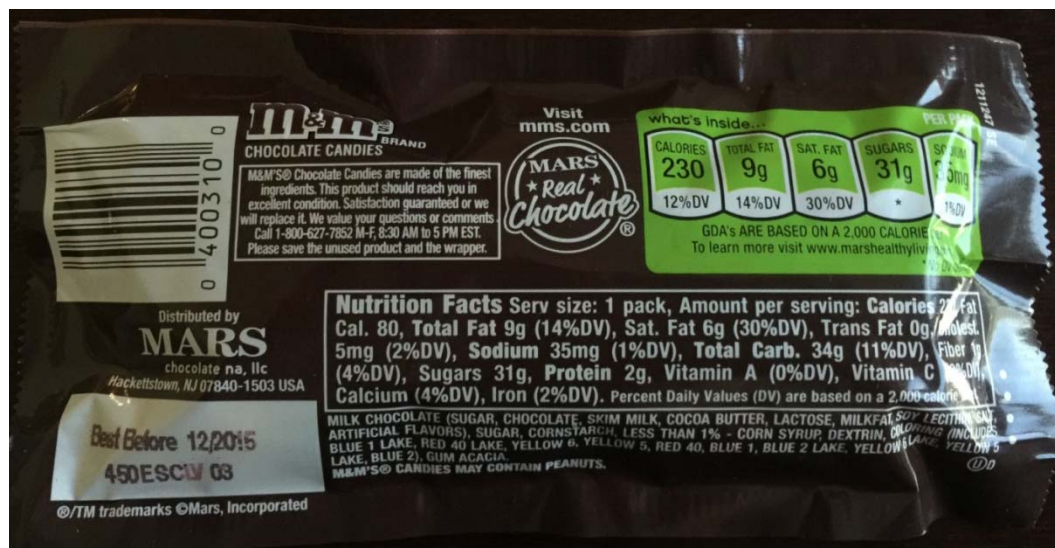
10 45. Mars works with large intermediaries like Barry Callebaut, ECOM, Cargil, and ADM
11 to import its cocoa. Mars then purchases cocoa from these entities and uses the cocoa to
12 manufacture its Chocolate Products, which are distributed to retail locations throughout the United
13 States.

14 46. At the retail location, a consumer reviewing the packaging for Mars Chocolate
15 Products will find no disclosure of the likelihood that child or forced labor was used to produce the
16 cocoa beans in the supply chain for Mars Chocolate Products:

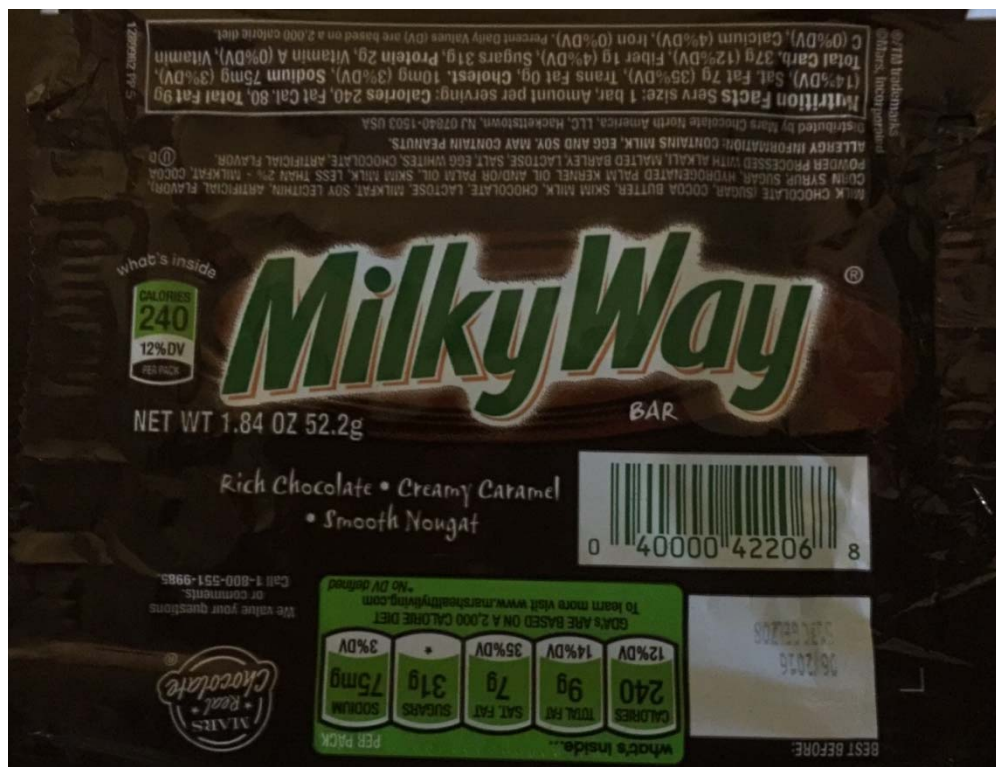
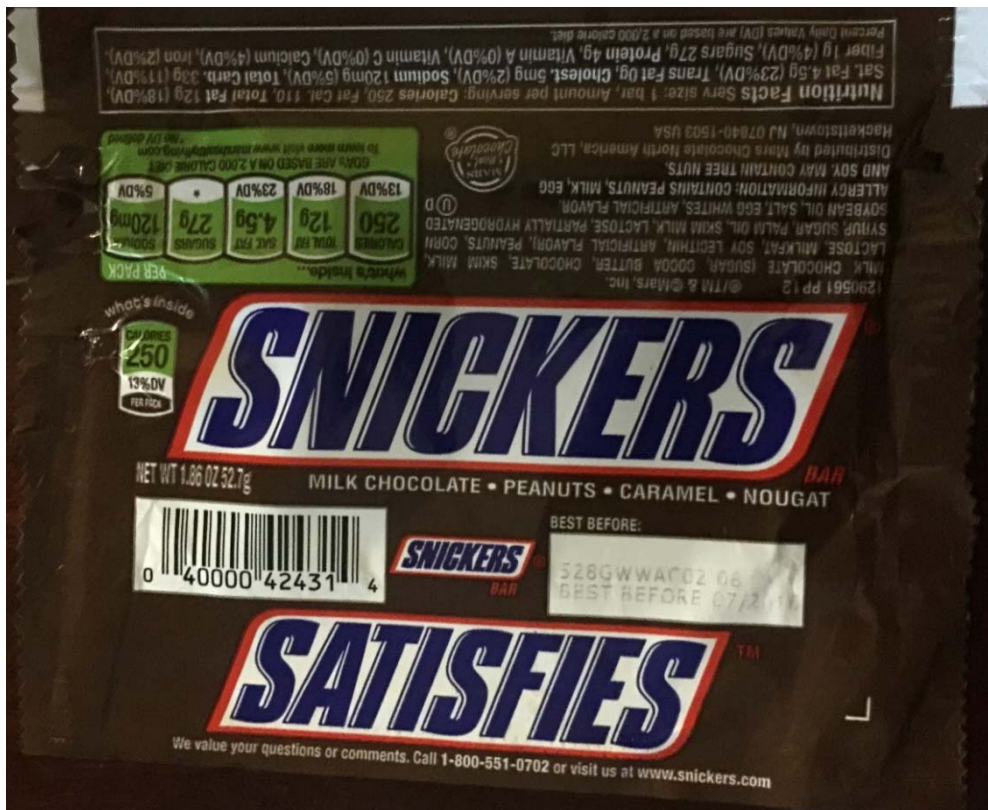


17
18
19
20
21
22
23
24
25
26 ³⁴ <http://www.nestlecocoaplan.com/wp-content/uploads/2012/06/ABOUT-THE-NESTLE-COCOA-PLAN.pdf>.

27 ³⁵ http://worldcocoafoundation.org/wp-content/uploads/Economic_Profile_of_the_US_Chocolate_Industry_2011.pdf.



1
2
3
4
5
6
7
8
9
10
11
12
13
14
15
16
17
18
19
20
21
22
23
24
25
26
27
28



1 47. While Mars does market Dove chocolate as certified by the Rainforest Alliance, the
2 label for Dove chocolate innocuously states that “We buy cocoa from Rainforest Alliance Certified
3 farms, traceable from the farms into our factory” – so as to not tip off the vast majority of consumers
4 who do not know about the human rights abuses. For those who are aware, Rainforest Alliance is a
5 certification that does not permit child labor.³⁶ Dove chocolate is excluded from the Chocolate
6 Products.

7 48. In sum, nowhere on the packaging for any of the Chocolate Products is there any
8 disclosure to the consumer of the child and/or slave labor conditions used to produce the cocoa beans
9 in Mars’ Ivorian supply chain, as there should be on all of the Chocolate Products.

10 **C. Mars Recognizes that the Use of Child or Slave Labor in its Supply Chain Is Wrong.**

11 49. Mars’ corporate business principles explicitly identify “Freedom” as one of its Five
12 Principles. Mars represents that its Five Principles are the foundation of its Human Rights Policy,
13 which states, “In accordance with the UN Guiding Principles [on Business and Human Rights], we
14 will implement a due diligence process to identify, mitigate and prevent adverse impacts on human
15 rights and appropriate mechanisms for remediation. No matter where we operate, Mars strives to
16 comply with the spirit and the letter of the law.”³⁷ In describing the relationship with Mars’
17 suppliers, the Human Rights Policy also states that the Mars Supplier Code of Conduct (the
18 “Supplier Code”) “sets our global expectations prohibiting the use of child labour in accordance with
19 ILO Minimum Age Convention No. 138 and in the areas of health and safety, the environment and
20 ethical business practices.”

21 50. For example, in the Supplier Code, Mars states that in order to do business with Mars,
22 “Supplier confirms that it complies with the legal requirements and standards of its industry
23 and...[i]f the Code establishes a higher standard than is required by applicable law, Mars expects its
24

25 ³⁶ <http://www.rainforest-alliance.org/work/agriculture>.

26 ³⁷ Mars.com, Mars Human Rights Policy, [http://www.mars.com/global/press-center/human-
rights.aspx](http://www.mars.com/global/press-center/human-rights.aspx) (last visited Aug. 27, 2015); *see also* Mars Supplier Code of Conduct, Mar. 2014, 4, 12,
27 http://www.sharedservices.mars.com/assets/Mars_S%20C%20of%20C%202014_English_May%2030.pdf
(last visited Aug. 27, 2015).

1 suppliers to align with the principles contained in the Code.”³⁸ Mars further warns that it “reserves
2 the right to conduct announced and unannounced on-site independent third-party audits of Supplier’s
3 facilities.”

4 51. The Supplier Code further states that a “Supplier employs all employees on a
5 voluntary basis and does not use any prison, slave, bonded, forced or indentured labor...or any other
6 forms of slavery or human trafficking.”³⁹ Moreover, Mars’ Code demands that a “Supplier does not
7 use or source raw materials or products associated with forced labor or human trafficking.”⁴⁰
8 Suppliers are not allowed to require children to work under hazardous conditions, for periods
9 exceeding eight hours per day, or in a “manner that unreasonably interferes with vocational
10 education.”⁴¹ As alleged above, all of these practices occur in the supply chain for Mars Chocolate
11 Products.

12 52. Additionally, Mars’ Supplier Code of Conduct demands that suppliers are capable of
13 “disclos[ing] the geographical location of facilities producing raw materials for Mars, as well as the
14 origin of raw materials within the suppliers own direct supply chain. Supplier will take responsibility
15 to implement the requirements of this Code and associated due diligence processes with those in its
16 own direct supply chain.”⁴²

17 53. In summary, although Mars recognizes that the use of child and/or slave labor in its
18 supply chain is wrong and its corporate business principles and supplier code explicitly forbid child
19 and slave labor by its suppliers, it materially omits to disclose to consumers at the point of purchase
20 the likelihood that its Chocolate Products are made from cocoa beans produced by Ivorian children
21 engaged in the Worst Forms of Child Labor.

24 ³⁸ *Id.* at 2.

25 ³⁹ *Id.* at 4, 12.

26 ⁴⁰ *Id.* at 4.

27 ⁴¹ *Id.* at 3.

28 ⁴² *Id.* at 13.

1 **D. Mars' Use of the Worst Forms of Child Labor in Its Chocolate Products Supply Chain**
 2 **Is Material to Consumers**

3 54. Consumers have become sensitive to the human cost behind the products that they
 4 buy. This sensitivity transcends industries and ranges from products as diverse as clothing to coffee.

5 55. A Harvard University study examined consumer willingness to pay a premium for
 6 coffee certified as Fair Trade on eBay.⁴³ A Fair Trade certification requires, amongst other things,
 7 that the producer not use forced and child labor in the production of its coffee.⁴⁴ The study found
 8 that consumers in online auctions were willing to pay an average of 23% more for coffee certified as
 9 Fair Trade.⁴⁵

10 56. A 2006 study by researchers at the University of Michigan analyzed consumer
 11 purchases to determining consumer willingness to pay a premium for athletic socks marked with a
 12 Good Working Conditions ("GWC") label.⁴⁶ The study concluded that 30% of consumers in a
 13 working class neighborhood of Detroit were willing to pay a 20% price premium (from \$1.00 to
 14 \$1.20) for GWC labeled socks compared to non-GWC labeled socks.⁴⁷

15 57. A 2011 study lead by researchers at Harvard University studied consumer willingness
 16 to pay a premium for polo shirts sold with an SA8000 certification on eBay.⁴⁸ The SA8000
 17 certification prohibits the use of child labor and forced labor and discrimination based on race,
 18 gender, and religion. The code mandates that workers be allowed to organize and bargain
 19 collectively with their employers. The SA8000 code also requires that workplaces satisfy minimum

20 ⁴³ See Michael J. Hiscox, Michael Broukhim, & Claire S. Litwin, *Consumer Demand for Fair*
 21 *Trade: New Evidence From A Field Experiment Using eBay Auctions of Fresh Roasted Coffee*
 (Mar. 16, 2011), [http://scholar.harvard.edu/files/hiscox/files/](http://scholar.harvard.edu/files/hiscox/files/consumerdemandfairlaborstandardsevidencecoffee.pdf)
 22 [consumerdemandfairlaborstandardsevidencecoffee.pdf](http://scholar.harvard.edu/files/hiscox/files/consumerdemandfairlaborstandardsevidencecoffee.pdf) (last visited Aug. 17, 2015).

23 ⁴⁴ *Id.* at 4.

24 ⁴⁵ *Id.* at 3, 23.

25 ⁴⁶ Howard Kimeldorf, Rachel Meyers, Monica Prasad, & Ian Robinson, *Consumers with a*
 26 *Conscience: Will They Pay More?* (Winter 2006), 24 available at [http://www.npr.org/documents/](http://www.npr.org/documents/2013/may/consumer_conscience_study_ME_20130501.pdf)
 27 [2013/may/consumer_conscience_study_ME_20130501.pdf](http://www.npr.org/documents/2013/may/consumer_conscience_study_ME_20130501.pdf) (last visited Aug. 17, 2015).

28 ⁴⁷ *Id.*

⁴⁸ Michael J. Hiscox, Michael Broukhim, Claire S. Litwin, Andrea Woloski, *Consumer Demand*
 For Fair Labor Standards: Evidence From a Field Experiment on eBay (Apr. 2011), 3
http://papers.ssrn.com/sol3/papers.cfm?abstract_id=1811788 (last visited Aug. 17, 2015).

1 health and safety standards, pay minimum (living) wages, and that overtime work is voluntary,
2 limited, and paid at a premium.⁴⁹ “On average, shoppers paid a 45% premium for labeled versus
3 unlabeled shirts. The findings suggest that there is substantial consumer support for fair labor
4 standards, even among price-sensitive eBay shoppers.”⁵⁰

5 58. Another survey by FishWise, a non-profit marine conservation organization, further
6 elucidates consumer willingness to pay when there are human rights abuses in supply chains.
7 Eighty-eight percent of consumers stated that they would stop buying a product if it was associated
8 with human rights abuses.⁵¹ The survey further revealed that 70% percent of consumers would pay
9 more for a product certified to be free of human rights abuses.⁵² FishWise noted that, “survey results
10 indicate that human rights are important to seafood consumers and many of them are willing to avoid
11 high risk products and pay more for those that are certified to be free of abuses.”⁵³

12 59. Mars is well aware of this consumer sensitivity and has mounted its extensive public
13 relations effort to position itself as a company that does not permit child and slave labor in its supply
14 chain. Its hollow public relations statements mask the tragic truth that millions of African children
15 are engaged in the Worst Forms of Child Labor. Had consumers known the truth, they would not
16 have purchased or paid as much for Mars Chocolate Products.

17 **V. CLASS ACTION ALLEGATIONS**

18 60. Under Rule 23 of the Federal Rules of Civil Procedure, Plaintiff seeks certification of
19 a Class defined as follows:

20 All consumers who purchased Mars Chocolate Products in California
21 during the four years prior to the filing of the complaint.

22
23 ⁴⁹ *Id.* (citing http://www.sa-intl.org/_data/n_0001/resources/live/2008StdEnglishFinal.pdf) (last visited Aug. 17, 2015).

24 ⁵⁰ Michael J. Hiscox, Michael Broukhim, Claire S. Litwin, Andrea Woloski, *Consumer Demand For Fair Labor Standards: Evidence From a Field Experiment on eBay* (Apr. 2011), 3, 22.

25 ⁵¹ FishWise, *Trafficked II: An updated summary of human rights abuses in the seafood industry* (2014), at p. 6, available at <http://www.fishwise.org/services/human-rights>.

26 ⁵² *Id.*

27 ⁵³ *Id.* at 7.

1 61. Excluded from the Class are Defendants; the officers, directors or employees of
2 Defendant; any entity in which Defendants have a controlling interest; and any affiliate, legal
3 representative, heir or assign of Defendants. Also, excluded from the Class are any federal, state or
4 local governmental entities, any judicial officer presiding over this action and the members of his/her
5 immediate family and judicial staff, and any juror assigned to this action.

6 62. Plaintiff does not know the exact number of Class Members at the present time.
7 However, due to the nature of the trade and commerce involved, there appear to be millions of Class
8 Members such that joinder of all Class members is impracticable.

9 63. The Class is ascertainable by objective criteria permitting self-identification in
10 response to notice, and notice can be provided through techniques similar to those customarily used
11 in other consumer fraud cases and complex class actions, and through Mars' business records.

12 64. There are questions of law and fact common to the Class. Defendants' unlawful
13 omissions similarly impact Class Members, all of who purchased one or more Chocolate Products.

14 65. Plaintiff asserts claims that are typical of the Class. Plaintiff and all Class Members
15 have been subjected to the same wrongful conduct because they all have purchased Defendants'
16 Chocolate Products that were not disclosed as likely sourced from suppliers using child and/or forced
17 labor. As a result, and like other members of the Class, Plaintiff purchased and paid an amount for
18 Chocolate Products which she otherwise would not have paid.

19 66. Plaintiff will fairly and adequately represent and protect the interests of the Class.
20 Plaintiff is represented by counsel competent and experienced in both consumer protection and class
21 action litigation.

22 67. Class certification is appropriate because Defendants have acted on grounds that
23 apply generally to the Class, so that final injunctive relief or corresponding declaratory relief is
24 appropriate respecting the Class as a whole.

25 68. Class certification is also appropriate because common questions of law and fact
26 substantially predominate over any questions that may affect only individual members of the Class,
27 including, *inter alia*, the following:

- 1 a. Whether Defendants failed to disclose the likelihood that the
2 Worst Forms of Child Labor were used in their Chocolate
3 Products supply chain;
- 4 b. Whether the likelihood that the Worst Forms of Child Labor
5 were used in Mars Chocolate Products supply chain would be
6 material to a reasonable consumer;
- 7 c. Whether Defendants had a duty to disclose the likelihood that
8 the Worst Forms of Child Labor were used in their Chocolate
9 Products supply chain;
- 10 d. Whether Defendants' nondisclosures were likely to deceive a
11 reasonable consumer;
- 12 e. Whether Defendants' conduct violates the UCL, FAL and
13 CLRA;
- 14 f. Whether the challenged practices harmed Plaintiff and
15 members of the Class; and
- 16 g. Whether Plaintiff and members of the Class are entitled to
17 restitutionary, injunctive, or other relief.

18 69. A class action is superior to other available methods for the fair and efficient
19 adjudication of this controversy, since joinder of all the individual Class Members is impracticable.
20 Furthermore, because the restitution and/or damages suffered, and continue to be suffered, by each
21 individual Class Member may be relatively small, the expense and burden of individual litigation
22 would make it very difficult or impossible for individual Class Members to redress the wrongs done
23 to each of them individually and the burden imposed on the judicial system would be enormous.

24 70. The prosecution of separate actions by the individual Class Members would create a
25 risk of inconsistent or varying adjudications, which would establish incompatible standards of
26 conduct for Defendants. In contrast, the conduct of this action as a class action presents far fewer
27 management difficulties, conserves judicial resources and the parties' resources, and protects the
28 rights of each Class Member.

VI. CAUSES OF ACTION

FIRST CAUSE OF ACTION

**VIOLATION OF THE CALIFORNIA UNFAIR COMPETITION LAW
(CAL. BUS. & PROF. CODE § 17200, *et seq.*)**

71. Plaintiff realleges and incorporates by reference all paragraphs alleged herein.

72. Cal. Bus. & Prof. Code § 17200 prohibits any “unlawful, unfair, or fraudulent business act or practice.” Defendants have engaged in unlawful, and unfair, and fraudulent business acts and practices in violation of the UCL.

73. Defendants have violated the unlawful prong by virtue of its violations of the CLRA, as described below.

74. Defendants have violated the unfair prong of section 17200 because the acts and practices set forth in the Complaint offend established public policies against the use of child and slave labor and the sale of products tainted by the use of child and slave labor and supporting truth in advertising to consumers. Defendants’ participation in a supply chain involving the Worst Forms of Child Labor is immoral, unethical, oppressive, unscrupulous and injurious to consumers. The harm that these acts and practices cause greatly outweighs any benefits associated with them. Defendants’ conduct also impairs competition within the market for chocolate products, and prevents Plaintiff and Class Members from making fully informed decisions about the kind of chocolate products to purchase or the price to pay for such products.

75. Defendants have violated the fraudulent prong of section 17200 because, as set forth above, its material omissions were likely to deceive a reasonable consumer and the true facts would be material to a reasonable consumer.

76. Defendants had a duty to disclose the likelihood of the child and/or slave labor in their supply chain, arising from (1) their superior knowledge of Mars’ supply chain and the practices of its suppliers as compared to consumers, *e.g.* through Mars’ years of experience marketing and distributing Chocolate Products made from cocoa bean from the Ivory Coast; and (2) their partial

1 representations and/or misrepresentations to the contrary, *e.g.*, numerous corporate statements that
2 Mars does not permit the use of child and/or forced labor by its suppliers.

3 77. As alleged herein, Mars failed to disclose the likelihood of child and/or slave labor in
4 its supply chain for Chocolate Products. Nor does Mars disclose that despite its awareness of child
5 and/or slave labor in its Chocolate Products supply chains, it has not required all of its suppliers to
6 remedy the ongoing human rights abuses.

7 78. These omissions would be material to a reasonable consumer.

8 79. Reasonable consumers are likely to be deceived by Defendants' material omissions.

9 80. Plaintiff has suffered injury in fact, including the loss of money, as a result of
10 Defendants' unlawful, unfair, and/or deceptive practices. Plaintiff and members of the Class were
11 directly and proximately injured by Defendants' conduct and lost money as a result of Defendants'
12 material omissions, because they would not have purchased nor paid as much for Chocolate Products
13 had they known the truth.

14 81. All of the wrongful conduct alleged herein occurred, and continues to occur, in the
15 conduct of Defendants' business. Defendants' wrongful conduct is part of a general practice that is
16 still being perpetuated and repeated throughout the State of California.

17 82. Plaintiff requests that this Court enter such orders or judgments as may be necessary
18 to enjoin Defendant from continuing its unfair and deceptive business practices, to restore to Plaintiff
19 and members of the Class any money that Defendants acquired by unfair competition, and to provide
20 such other relief as set forth below.

21 83. Plaintiff is entitled to an award of reasonable attorneys' fees under California Code of
22 Civil Procedure Section 1021.5 for the benefit conferred upon the general public of the State of
23 California by any injunctive or other relief entered herein.

24 **SECOND CAUSE OF ACTION**

25 **VIOLATIONS OF THE CONSUMERS LEGAL REMEDIES ACT**
26 **(CAL. CIV. CODE § 1750, *et seq.*)**

27 84. Plaintiff realleges and incorporates by reference all paragraphs alleged herein.

1 85. Defendants are “persons” under Cal. Civ. Code § 1761(c).

2 86. Plaintiff is a “consumer,” as defined by Cal. Civ. Code § 1761(d), who purchased
3 Defendants’ Chocolate Products.

4 87. Cal. Civ. Code § 1770(a)(2) prohibits “[m]isrepresenting the source, sponsorship,
5 approval, or certification of goods or services.”

6 88. Cal. Civ. Code § 1770(a)(5) prohibits “[r]epresenting that goods or services have
7 sponsorship, approval, characteristics, ingredients, uses, benefits, or quantities which they do not
8 have....”

9 89. Cal. Civ. Code § 1770(a)(7) prohibits “[r]epresenting that goods or services are of a
10 particular standard, quality, or grade, or that goods are of a particular style or model, if they are of
11 another.”

12 90. Defendants violated these provisions of the CLRA by misrepresenting the source,
13 characteristics, and standard of their Chocolate Products in omitting disclosure of material aspects
14 thereof.

15 91. As alleged herein, Mars failed to disclose the likelihood of child and/or slave labor in
16 the supply chain for its Chocolate Products. Nor does Mars disclose that despite its awareness of
17 child and/or slave labor in its Chocolate Products supply chains, it has not required all of its suppliers
18 to remedy the ongoing human rights abuses.

19 92. These omissions would be material to a reasonable consumer.

20 93. Reasonable consumers are likely to be deceived by Defendants’ material omissions.

21 94. Plaintiff and members of the Class were directly and proximately injured by
22 Defendants’ conduct and lost money as a result of Defendants’ material omissions, because they
23 would not have purchased nor paid as much for Mars Chocolate Products had they known the truth.

24 95. In accordance with Civil Code § 1780 (a), Plaintiff and Class Members seek
25 restitutionary, injunctive and equitable relief for Defendants’ violations of the CLRA. Plaintiff
26 requests that this Court enter such orders or judgments as may be necessary to restore to any person
27 in interest any money which may have been acquired by means of such unfair business practices, and
28

1 for such other relief, including attorneys’ fees and costs, as provided in Civil Code § 1780 and the
2 Prayer for Relief. In addition, after mailing appropriate notice and demand in accordance with Civil
3 Code § 1782(a) & (d), Plaintiff will amend this Class Action Complaint to include a request for
4 damages.

5 96. Plaintiff includes an affidavit with this Complaint reflecting that venue in this District
6 is proper, to the extent such an affidavit is required by Cal. Civ. Code § 1780(d) in federal court.

7 **THIRD CAUSE OF ACTION**

8 **VIOLATIONS OF THE FALSE ADVERTISING LAW**
9 **(CAL. BUS. & PROF CODE §§ 17500, et seq.)**

10 97. Plaintiff realleges and incorporates by reference all paragraphs alleged herein.

11 98. California Business & Professions Code §§ 17500, et seq. (the “FAL”) broadly
12 proscribes deceptive advertising in this State. Section 17500 makes it unlawful for any corporation
13 intending to sell products or perform services to make any statement in advertising those products or
14 services concerning any circumstance or matter of fact connected with the proposed performance or
15 disposition thereof, which is untrue or misleading, and which is known, or which by the exercise of
16 reasonable care should be known, to be untrue or misleading, or not to sell those products or services
17 as advertised at the price stated therein, or as so advertised.

18 99. When the seller has a duty to disclose material facts about a product, the sale of the
19 product to consumers without disclosure of such material facts runs afoul of the FAL.

20 100. As alleged herein, Mars failed to disclose the likelihood of child and/or slave labor in
21 the supply chain for its Chocolate Products. Nor does Mars disclose that despite its awareness of
22 child and/or slave labor in its Chocolate Products supply chains, it has not required all of its suppliers
23 to remedy the ongoing human rights abuses.

24 101. Mars had a duty to disclose the likelihood of child and/or forced labor in its supply
25 chain, arising from (1) its superior knowledge of Mars’ supply chain and the practices of its suppliers
26 as compared to consumers, e.g. through Mars’ years of experience marketing and distributing
27 Chocolate Products made from Ivorian cocoa beans; and (2) Mars’ partial representations and/or
28

1 misrepresentations to the contrary, *e.g.*, numerous corporate statements that Mars does not permit the
2 use of child and/or forced labor by its suppliers.

3 102. These omissions would be material to a reasonable consumer.

4 103. Reasonable consumers are likely to be deceived by Defendants’ material omissions.

5 104. Defendants knew or reasonably should know that the marketing and sale of its
6 Chocolate Products was and is deceptive.

7 105. Plaintiff has suffered injury in fact, including the loss of money, as a result of
8 Defendants’ unlawful, unfair, and/or deceptive practices. Plaintiff and members of the Class were
9 directly and proximately injured by Defendants’ conduct and lost money as a result of Defendants’
10 material omissions, because they would not have purchased nor paid as much for Defendants’
11 Chocolate Products had they known the truth.

12 106. All of the wrongful conduct alleged herein occurred, and continues to occur, in the
13 conduct of Defendants’ business. Defendants’ wrongful conduct is part of a general practice that is
14 still being perpetuated and repeated throughout the State of California.

15 107. Plaintiff requests that this Court enter such orders or judgments as may be necessary
16 to enjoin Defendants from continuing its deceptive advertising, to restore to Plaintiff and members of
17 the Class any money that Defendants unlawfully acquired, and to provide such other relief as set
18 forth below.

19 108. Plaintiff is entitled to an award of reasonable attorneys’ fees under California Code of
20 Civil Procedure Section 1021.5 for the benefit conferred upon the general public of the State of
21 California by any injunctive or other relief entered herein.

22 **PRAYER FOR RELIEF**

23 WHEREFORE, Plaintiff, individually and on behalf of all others similarly situated,
24 respectfully requests that this Court enter a judgment against Defendants and in favor of Plaintiff,
25 and grant the following relief:

26 A. Determine that this action may be maintained as a class action with respect to the
27 Class identified herein and certify it as such under Rules 23(b)(2) and/or 23(b)(3), or alternatively

28

1 certify all issues and claims that are appropriately certified, and designate and appoint Plaintiff as
2 Class Representatives and their counsel as Class Counsel;

3 B. Declare, adjudge and decree the conduct of Defendant as alleged herein to be
4 unlawful, unfair and/or deceptive;

5 C. Enjoin Defendants from continuing the unfair and deceptive marketing and sale of
6 their Chocolate Products;

7 D. Award Plaintiff and the Class restitution of all monies paid to Defendants as a result
8 of its unfair and deceptive business practices;

9 E. Award Plaintiff and the Class reasonable attorneys' fees, costs, and pre- and post-
10 judgment interest; and

11 F. Award Plaintiff and the Class such other further and different relief as the nature of
12 the case may require or as may be determined to be just, equitable, and proper by this Court.

13 **JURY TRIAL DEMAND**

14 Plaintiff, by counsel, requests a trial by jury for all claims so triable.

15
16 DATED: September 28, 2015

HAGENS BERMAN SOBOL SHAPIRO LLP

17 By: /s/ Elaine T. Byszewski

18 Elaine T. Byszewski (SBN 222304)
19 Christopher R. Pitoun (SBN 290235)
20 301 N. Lake Avenue, Suite 203
21 Pasadena, CA 91101
22 Telephone: (213) 330-7150
23 elaine@hbsslaw.com
24 christopherp@hbsslaw.com

25 Steve W. Berman (*pro hac vice*)
26 Ashley A. Bede (*pro hac vice*)
27 HAGENS BERMAN SOBOL SHAPIRO LLP
28 1918 Eighth Avenue, Suite 3300
Seattle, WA 98101
Telephone: (206) 623-7292
steve@hbsslaw.com
ashleyb@hbsslaw.com

Attorneys for Plaintiff and the Proposed Class


DECLARATION RE CLRA VENUE

I, Robert Hodsdon, do hereby declare and state as follows:

1. I am a party plaintiff in the above captioned action. Pursuant to Cal. Civ. Code § 1780(d), I make this declaration in support of the Class Action Complaint and the claim therein for relief under Cal. Civ. Code § 1780(a). I have personal knowledge of the facts stated herein and, if necessary, could competently testify thereto.

2. This action for relief under Cal. Civ. Code § 1780(a) has been commenced in a county that is a proper place for trial of this action because Mars, Inc. does business throughout the State of California.

This declaration is signed under penalty of perjury under the laws of the State of California this 23rd day of September 2015.



Robert Hodsdon

CIVIL COVER SHEET

The JS 44 civil cover sheet and the information contained herein neither replace nor supplement the filing and service of pleadings or other papers as required by law, except as provided by local rules of court. This form, approved by the Judicial Conference of the United States in September 1974, is required for the use of the Clerk of Court for the purpose of initiating the civil docket sheet. (SEE INSTRUCTIONS ON NEXT PAGE OF THIS FORM.)

I. (a) PLAINTIFFS

Robert Hodsdon, on behalf of himself and all others similarly situated

(b) County of Residence of First Listed Plaintiff Marin County (EXCEPT IN U.S. PLAINTIFF CASES)

(c) Attorneys (Firm Name, Address, and Telephone Number) HAGENS BERMAN SOBOL SHAPIRO LLP 301 N. Lake Avenue, Suite 203, Pasadena, CA 91101 Telephone: (213) 330-7150

DEFENDANTS

MARS, INC., a Delaware Corporation, and MARS CHOCOLATE NORTH AMERICA LLC, a Delaware Company

County of Residence of First Listed Defendant (IN U.S. PLAINTIFF CASES ONLY)

NOTE: IN LAND CONDEMNATION CASES, USE THE LOCATION OF THE TRACT OF LAND INVOLVED.

Attorneys (If Known)

II. BASIS OF JURISDICTION (Place an "X" in One Box Only)

- 1 U.S. Government Plaintiff, 2 U.S. Government Defendant, 3 Federal Question (U.S. Government Not a Party), 4 Diversity (Indicate Citizenship of Parties in Item III)

III. CITIZENSHIP OF PRINCIPAL PARTIES (Place an "X" in One Box for Plaintiff and One Box for Defendant)

Table with columns for Plaintiff (PTF) and Defendant (DEF) citizenship: Citizen of This State, Citizen of Another State, Citizen or Subject of a Foreign Country, Incorporated or Principal Place of Business In This State, Incorporated and Principal Place of Business In Another State, Foreign Nation.

IV. NATURE OF SUIT (Place an "X" in One Box Only)

Large table with categories: CONTRACT, REAL PROPERTY, TORTS, CIVIL RIGHTS, PRISONER PETITIONS, FORFEITURE/PENALTY, LABOR, IMMIGRATION, BANKRUPTCY, SOCIAL SECURITY, FEDERAL TAX SUITS, OTHER STATUTES.

V. ORIGIN (Place an "X" in One Box Only)

- 1 Original Proceeding, 2 Removed from State Court, 3 Remanded from Appellate Court, 4 Reinstated or Reopened, 5 Transferred from Another District (specify), 6 Multidistrict Litigation

VI. CAUSE OF ACTION

Cite the U.S. Civil Statute under which you are filing (Do not cite jurisdictional statutes unless diversity): 28 U.S.C. § 1332(d); CA Bus. & Prof. Codes §§ 17200, et seq., §§ 17500, et seq.; CA Civ. Code §§ 1750, et seq. Brief description of cause: Violations of above California Codes for nondisclosure of use of child/forced labor in supply chain for chocolate.

VII. REQUESTED IN COMPLAINT:

CHECK IF THIS IS A CLASS ACTION UNDER RULE 23, F.R.Cv.P. DEMAND \$ CHECK YES only if demanded in complaint: JURY DEMAND: Yes No

VIII. RELATED CASE(S) IF ANY

(See instructions): JUDGE DOCKET NUMBER

DATE 09/28/2015 SIGNATURE OF ATTORNEY OF RECORD /s/ Elaine T. Byszewski

IX. DIVISIONAL ASSIGNMENT (Civil L.R. 3-2)

(Place an "X" in One Box Only) SAN FRANCISCO/OAKLAND SAN JOSE EUREKA